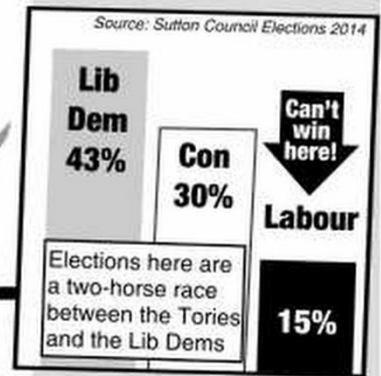


Sutton North Special FOCUS

News from Cllr Ruth Dombey, Cllr Marlene Heron and Cllr Steve Penneck

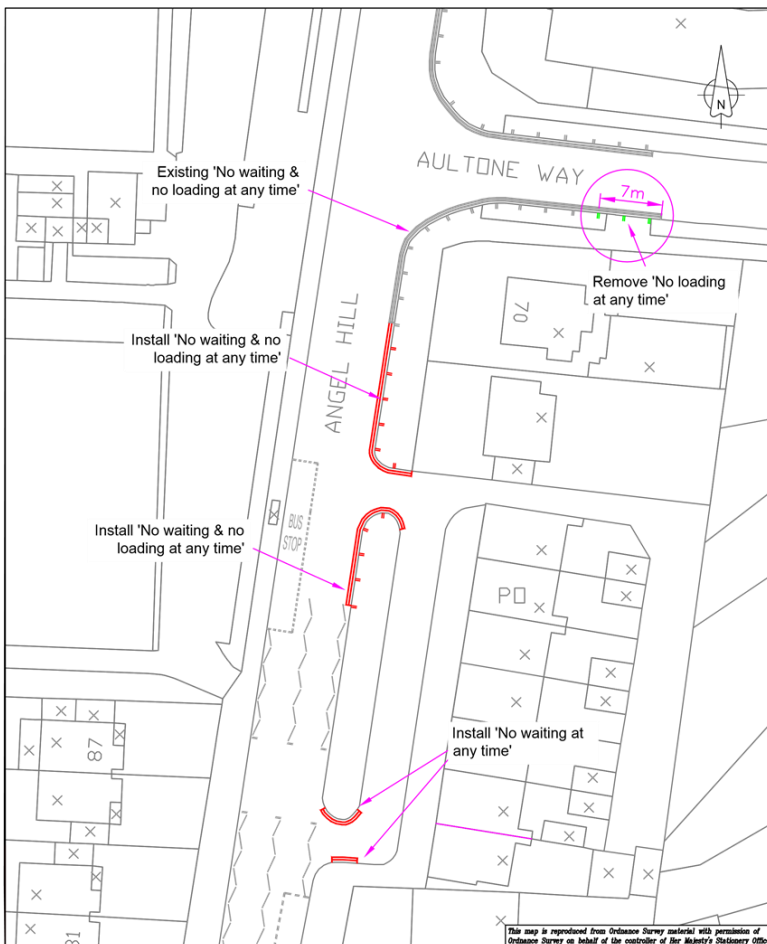


PARKING RESTRICTIONS BY THE SHOPS IN ANGEL HILL

Following an informal consultation with residents, and then a statutory consultation, parking restrictions are to be introduced by the shops in Angel Hill, according to the plan shown below.

These proposals have been made at the request of residents to improve access, safety and sight lines. They will become effective in early November.

Ruth, Marlene and Steve



Visit our website: suttonnorth.focusteam.org.uk

Contact your local
Lib Dem Team

Cllr Ruth Dombey



Tel: 020 8770 5044
Email: Ruth.Dombey@sutton.gov.uk

Cllr Marlene Heron



Tel: 020 8770 5511
Email: Marlene.Heron@sutton.gov.uk

Cllr Steve Penneck



Tel: 020 8770 6400
Email: Steve.Penneck@sutton.gov.uk

Your Sutton North Lib Dem team work hard all year round

Let us know your views

Name: _____ Phone: _____

Address: _____ Postcode: _____

Email:

[If you return this form] The Liberal Democrats and their elected representatives may use the information you've given to contact you. By providing your data to us, you are consenting to us making contact with you in the future by mail, email, telephone, text, website and apps, even though you may be registered with the Telephone Preference Service. You can always opt out of communications at any time by contacting us or visiting www.libdems.org.uk/optout for more information go to www.libdems.org.uk/privacy.

On a scale of 1 (low) to 5 (high), how well do the following parties speak up for you?

Lib Dems	1	2	3	4	5
Labour	1	2	3	4	5
Conservative	1	2	3	4	5
UKIP	1	2	3	4	5
Green	1	2	3	4	5

What are your top three local issues?

Education	St Helier	Crime
Parking	Planning	Environment
Transport	Traffic	Parks

On a scale of 1 (lowest) to 10 (highest) how well do you rate the work of Lib Dem-run Sutton Council?

1 2 3 4 5 6 7 8 9 10

 Please use the space below to let us know your views on the issues raised overleaf or any other issues that concern you.

**Return in an envelope addressed to:
 Freepost LIB DEM FOCUS TEAM**